



# MONTHLY MEMBERSHIP PROGRESS REPORT

District 323E1

Results as of: 5/31/2017

GMT: KAMLESH JAIN

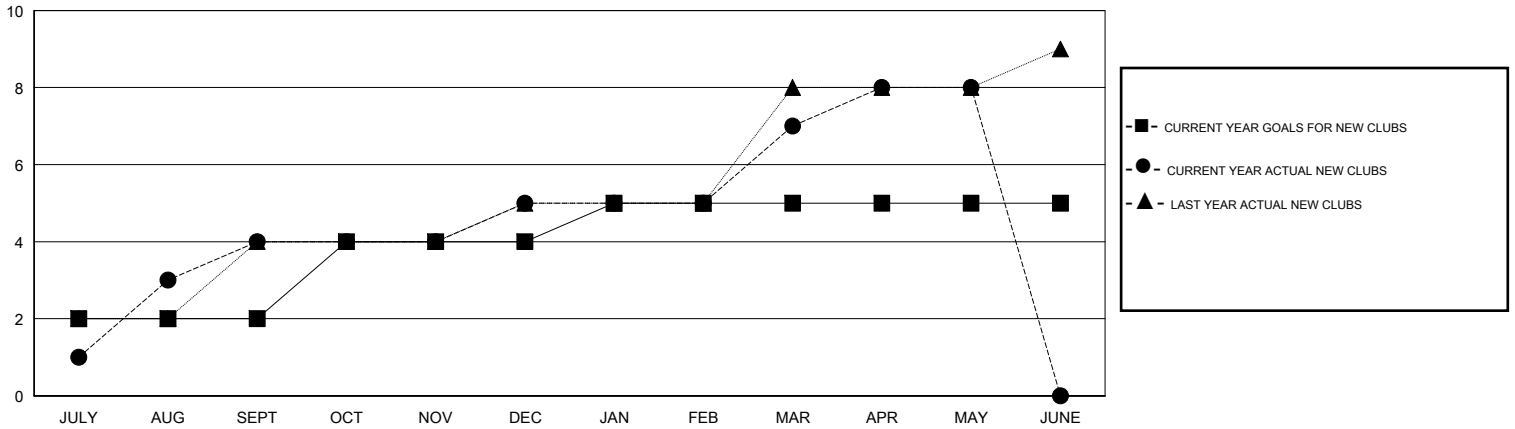
LOCATION INDIA

GMT CA

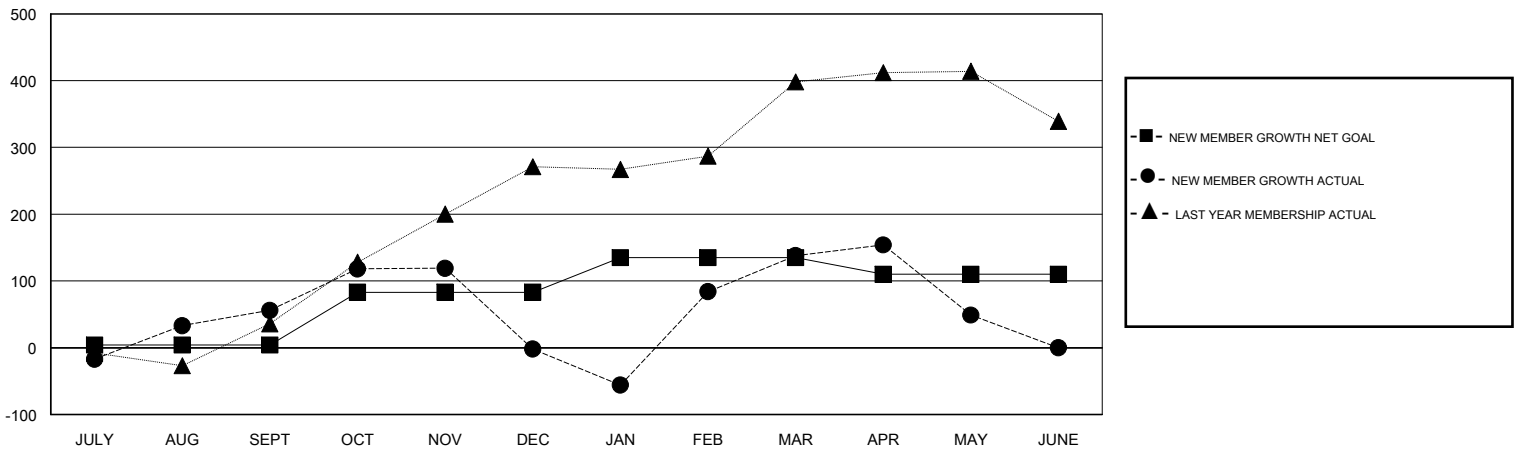
Clubs			
RESULTS FOR 2016-2017			
QUARTER	NEW CLUB GOAL	NEW CLUBS	DROPPED CLUBS
JULY/AUG/SEPT	2	4	0
OCT/NOV/DEC	2	1	7
JAN/FEB/MAR	1	2	3
APR/MAY/JUNE	0	1	0

Members			
RESULTS FOR 2016-2017			
QUARTER	NEW MEMBER GROWTH NET GOAL (not reinstated or transfers)	NEW MEMBER GROWTH ACTUAL (not reinstated or transfers)	DROPPED MEMBERS ACTUAL (including transfers)
JULY/AUG/SEPT	4	173	117
OCT/NOV/DEC	79	123	181
JAN/FEB/MAR	52	314	174
APR/MAY/JUNE	-25	86	175

GOALS AND ACTUAL NEW CLUBS CUMULATIVE



GOALS AND ACTUAL MEMBERS CUMULATIVE



DROPPED CLUBS: 10	
DROPPED MEMBERS	
DECEASED	3
CLUB CANCELLED	249
OTHER	395
<b>TOTAL</b>	<b>647</b>

79 CLUBS OF 136 ADDED 1 OR MORE NEW MEMBERS
<a href="#">CLICK HERE FOR CUMULATIVE MEMBERSHIP DATA</a>

<u>GENDER DISTRIBUTION</u>	
MALE	3,802 (76.01%)
FEMALE	1,200 (23.99%)
TOTAL FAMILY UNIT MEMBERS	1,767
FAMILY MEMBERS PAYING HALF DUES	984